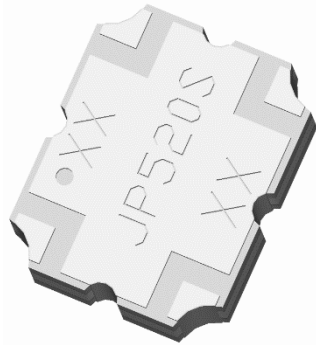


Xinger®

Pico Xinger
20dB Directional Coupler



Description:

The JP520S Pico Xinger is a low profile, miniature 20dB directional coupler in an easy to use surface mount package designed for UMTS and WCDMA applications. The JP520S is for power and frequency detection as well as power injection. The JP520S is an ideal solution for the ever-increasing demands of the wireless industry for smaller printed circuit boards and high performance. Parts have been subjected to rigorous qualification testing and units are 100% tested. They are manufactured using materials with x and y thermal expansion coefficients compatible with common substrates. Available in both 5 of 6 tin lead (JP520) and 6 of 6 RoHS compliant tin immersion (JP520S).

Features:

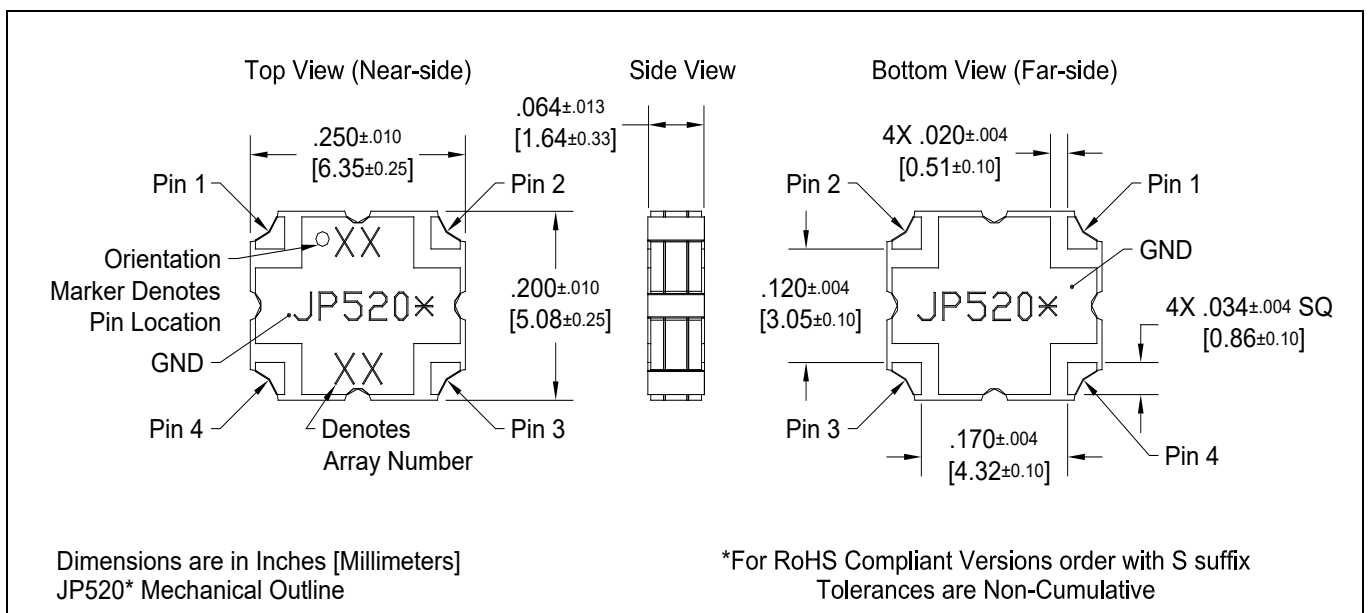
- 2.0 – 2.3 GHz
- UMTS and WCDMA
- Very Low Loss
- High Directivity
- Surface Mountable
- Tape and Reel
- Available in Lead-Free (as illustrated) or Tin-Lead

Electrical Specifications**

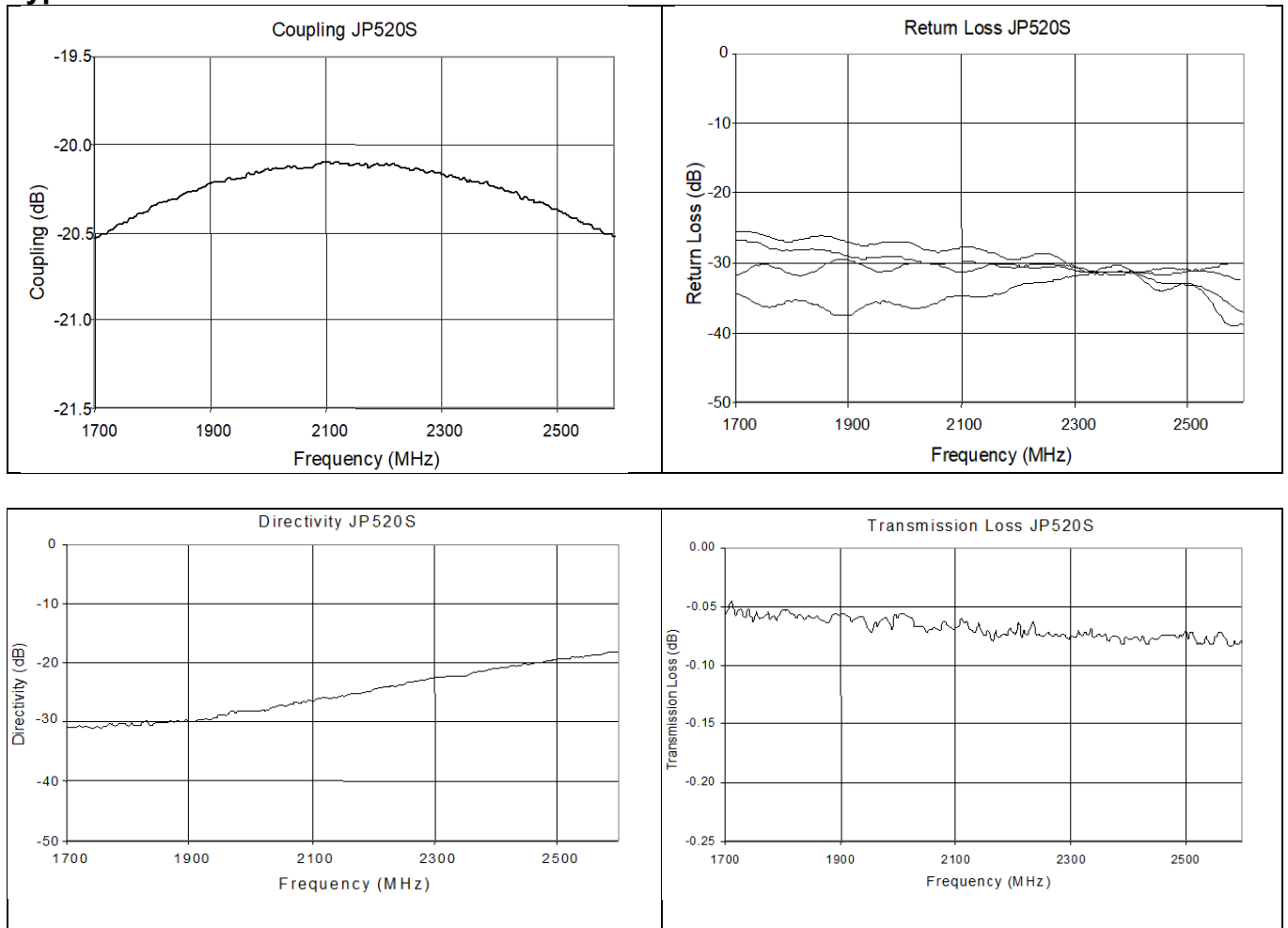
| Frequency | Mean Coupling | Insertion Loss | VSWR | Freq. Sensitivity |
|-------------|----------------|----------------|-----------------|-------------------|
| GHz | dB | dB Max | Max : 1 | dB Max |
| 2.0 – 2.3 | 20 ± 0.75 | 0.25 | 1.22 | ± 0.2 |
| Directivity | Power Handling | ⊙JC | Operating Temp. | |
| dB Min | Ave CW Watts | °C / Watt | °C | |
| 20 | 25 | 35 | -55 to +85 | |

**Specification based on performance of unit properly installed on microstrip printed circuit boards with 50 Ω nominal impedance. Specifications subject to change without notice.

Mechanical Outline:

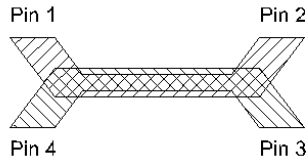


Typical Performance 1.7 GHz. – 2.6 GHz.



Pin Configuration

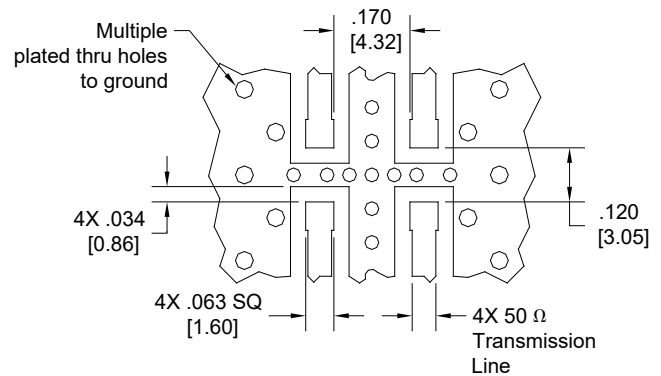
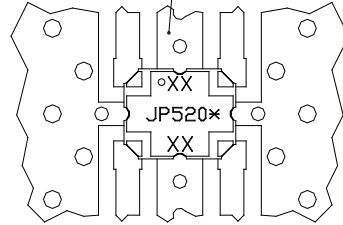
The JP520's have an orientation marker to denote either pin 1 or pin 2. When the input port is identified, the output, coupled and isolated ports are known automatically. For example, if the input port for a device was selected to be Pin 1, Pin 2 automatically becomes the output port, Pin 4 becomes the coupled port, and Pin 3 is the isolated port. Similarly, if Pin 2 was to be selected as the input port, the adjacent port on the long side (Pin 1) is the output port, the adjacent port on the short side (Pin 3) is the coupled port, and the opposite port (Pin 4) is the isolated port. Either port on the same side as the orientation marker can be selected as the input port, as shown in the table, which shows both pin configurations. The use of pin 1 or pin 2 as the input port ensures phase consistency as well as maximum power handling.



| Directional Coupler Pin Configuration | | | | |
|---------------------------------------|--------|--------|----------|----------|
| | Pin 1 | Pin 2 | Pin 3 | Pin 4 |
| Configuration #1 | Input | Output | Isolated | Coupled |
| Configuration #2 | Output | Input | Coupled | Isolated |

Mounting Footprint

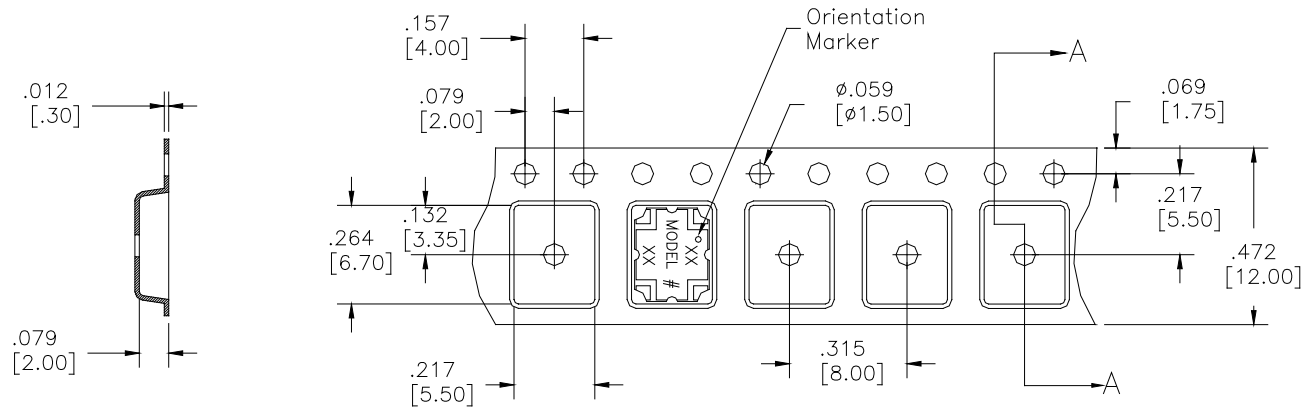
To ensure proper electrical and thermal performance there must be a ground plane with 100% solder connection underneath the part



Dimensions are in Inches [Millimeters]
JP520* Mounting Footprint

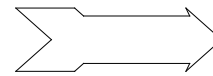
Packaging and Ordering Information:

Packaging follows EIA-481-2. Parts are oriented in tape as shown below. Minimum order quantities are 2000 per reel and 77 per tube.



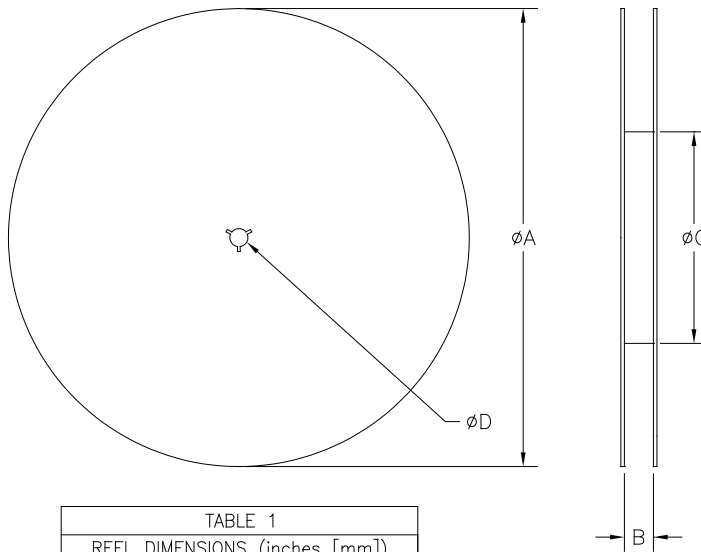
SECTION A-A

Dimensions are in inches [mm]



Direction of
Part Feed
(Unloading)

Xinger® Tape & Reel Diagram



| TABLE 1 | |
|-------------------------------|----------------|
| REEL DIMENSIONS (inches [mm]) | |
| ϕA | 13.3 [333.0] |
| B | 0.472 [12.0] |
| ϕC | 4.017 [102.03] |
| ϕD | 0.512 [13.0] |

Contact us:
rf&s_support@ttm.com

Mouser Electronics

Authorized Distributor

Click to View Pricing, Inventory, Delivery & Lifecycle Information:

[Anaren:](#)

[JP520S](#)