

GRF2543

High Gain, Ultra-LNA with Bypass 802.11ac: 4.9 to 6 GHz

FEATURES

- Flexible Bias Voltage and Current
- Process: GaAs pHEMT
- Internally Matched to 50 Ω
- Compact 1.5 x 1.5 mm DFN-6 Package

Reference: 3.3 V / 5.5 GHz / 15 mA

- Gain: 14.5 dB
- OP1dB: 11.5 dBm
- Evaluation Board Noise Figure: 1.0 dB
- Bypass Mode Gain: -1.0 dB
- Bypass Mode IP1dB: 24 dBm

APPLICATIONS

- WiFi Access Points
- Mobile WiFi Devices
- 802.11p Vehicle Communications
- Microwave Backhaul

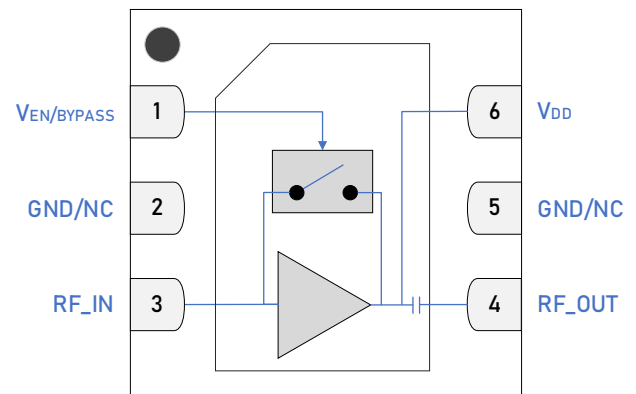
DESCRIPTION

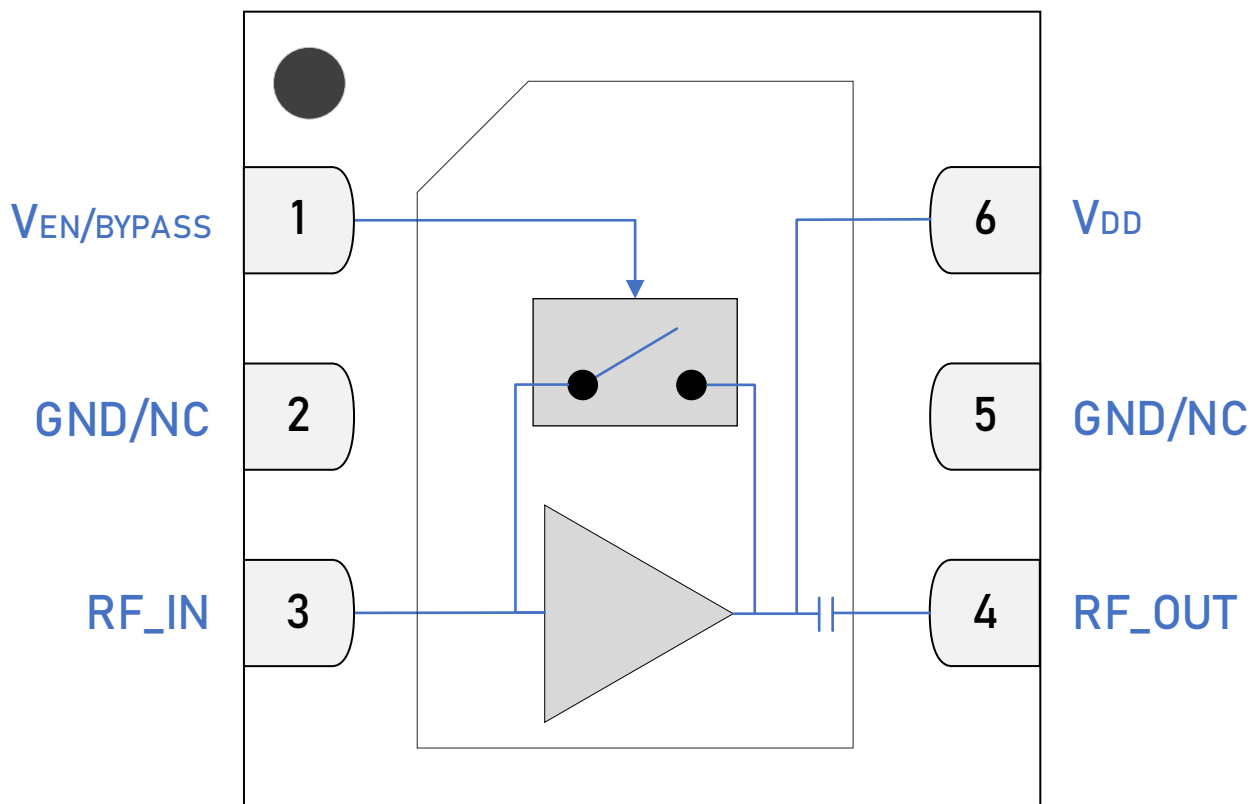
The GRF2543 is an ultra-low noise amplifier (LNA) with bypass designed for IEEE 802.11a/n/ac/p applications from 5.1 to 5.925 GHz. The device exhibits outstanding noise figure, linearity and gain up to 6 GHz. Note that the reported NF is for the entire evaluation board from SMA to SMA connector.

The LNA is operated from a single positive supply of 2.7 to 5 volts with typical bias conditions of 3.3 volts and 15 mA.

Consult with the GRF applications engineering team for custom tuning/evaluation board data and device s-parameters.

BLOCK DIAGRAM





1.5 x 1.5 mm DFN-6 Pin Out (Top View)

Pin Assignments

Pin	Name	Description	Note
1	VENABLE/BYPASS	VEN/BYPASS Voltage Input	V _{EN/BYPASS} and series resistor set I _{DDQ} . V _{EN/BYPASS} < 0.2 volts disables device. On-die pull-down resistor will turn the device off if this node is allowed to float.
2, 5	GND/NC	No Connect or Ground	No internal connections to die.
3	RF_IN	LNA RF Input	An external DC blocking capacitor must be used.
4	RF_OUT	LNA RF Output	Internally DC blocked but do not apply external DC > 0.2 volts to this pin. External capacitor to ground strongly affects the impedance matching of the device.
6	V _{DD}	V _{DD} /I _{DD} Input	Requires bypass capacitance as close as possible to pin on PCB.
PKG BASE	GND	Ground	Provides DC and RF ground for LNA, as well as thermal heat sink. Recommend multiple 8 mil vias beneath the package for optimal RF and thermal performance. Refer to evaluation board top layer graphic on schematic page.

V_{EN/BYPASS} Truth Table

Mode	Description	V _{EN/BYPASS}
High Gain	High LNA Gain	1
Bypass	Linear Bypass Mode	0
Logic Level "0"	Logic Low	0 V to 0.2 V
Logic Level "1"	Logic High	1.5 V to V _{DD}

Absolute Ratings

Parameter	Symbol	Min.	Max.	Unit
Supply Voltage	V_{DD}	0	6	V
RF Input Power (Load VSWR < 2:1, $V_{DD} = 5$ V)	$P_{IN\ MAX}$		15	dBm
Operating Temperature (Package Heat Sink)	$T_{PKG\ HEAT\ SINK}$	-40	105	°C
Maximum Channel Temperature (MTTF > 10 ⁶ Hours)	T_{MAX}		170	°C
Maximum Dissipated Power	$P_{DISS\ MAX}$		200	mW

Electrostatic Discharge

Human Body Model	HBM	500		V
------------------	-----	-----	--	---

Storage

Storage Temperature	T_{STG}	-65	150	°C
Moisture Sensitivity Level	MSL		1	--



Caution! ESD Sensitive Device.

Exceeding Absolute Maximum Rating conditions may cause permanent damage.

Note: For additional information, please refer to *Package Manufacturing Information* | *Guerrilla RF* (guerrilla-rf.com)



All Guerrilla RF products are provided in RoHS compliant lead (Pb)-free packaging requiring no exemptions. Additional information for this topic can be found at this link - *Environmental and Restricted Substance Statement Library*

Recommended Operating Conditions

Parameter	Symbol	Specification			Unit	Condition
		Min.	Typ.	Max.		
Supply Voltage	V_{DD}	0		6	V	
Operating Temperature (Package Heat Sink)	$T_{PKG\ HEAT\ SINK}$	-40		105	°C	
RF Frequency Range	F_{RF}	4.9		6	GHz	Typical Application Schematic with external matching components (note 1 & 2).
RF_IN Port Impedance	Z_{RFIN}		50		Ω	Single Ended, with 3-element match.
RF_OUT Port Impedance	Z_{RFOUT}		50		Ω	Single Ended.

Note 1: Operation outside this range is possible, but with degraded performance of some parameters.

Note 2: Contact the Guerrilla RF Applications team for guidance on optimizing the tuning of the device for alternative bands.

Nominal Operating Parameters – General

The following conditions apply unless noted otherwise: Typical Application Schematic using the 4.9 to 6 GHz tuning set. $M5 = 1.5 \text{ k}\Omega$. $V_{DD} = 3.3 \text{ V}$, $V_{EN/BYPASS} = \text{high}$, $I_{DD} = 15 \text{ mA}$. $F_{TEST} = 5.5 \text{ GHz}$. $T_{PKG \text{ HEAT SINK}} = 25 \text{ }^\circ\text{C}$. Evaluation board losses are included within the specifications.

Parameter	Symbol	Specification			Unit	Condition
		Min.	Typ.	Max.		
Supply Current	I_{DD}	10	15	21	mA	$V_{DD} = 3.3 \text{ V}$, $V_{EN/BYPASS} = \text{high}$
Enable Current	I_{ENABLE}		1	1.5	mA	$V_{DD} = 3.3 \text{ V}$, $V_{EN/BYPASS} = \text{high}$
Switching Rise Time	T_{RISE}		150		ns	Bypass Mode to Gain Mode (note 3).
Switching Fall Time	T_{FALL}		50		ns	Gain Mode to Bypass Mode (note 4).

Disabled Mode

Leakage Current	$I_{LEAKAGE}$		500	700	μA	$V_{DD} = 3.3 \text{ V}$, $V_{EN/BYPASS} = 0 \text{ V}$
-----------------	---------------	--	-----	-----	---------------	--

Thermal Data

Thermal Resistance: (Infrared Scan)	Θ_{JC}		75		$^\circ\text{C}/\text{W}$	On Standard Evaluation Board (note 5).
-------------------------------------	---------------	--	----	--	---------------------------	---

Note 3: Switching Time: 50% of $V_{EN/BYPASS}$ to 90% of P_{out} .

Note 4: Switching Time: 50% of $V_{EN/BYPASS}$ to 10% of P_{out} .

Note 5: MTTF > 10^6 hours for $T_{CHANNEL} \leq 170 \text{ }^\circ\text{C}$.

Nominal Operating Parameters – RF

The following conditions apply unless noted otherwise: Typical Application Schematic using the 4.9 to 6 GHz tuning set. $M5 = 1.5 \text{ k}\Omega$. $V_{DD} = 3.3 \text{ V}$, $V_{EN/BYPASS} = \text{high}$, $I_{DD} = 15 \text{ mA}$. $F_{TEST} = 5.5 \text{ GHz}$. $T_{PKG \text{ HEAT SINK}} = 25 \text{ }^\circ\text{C}$. Evaluation board losses are included within the specifications.

Parameter	Symbol	Specification			Unit	Condition
		Min.	Typ.	Max.		
High Gain Mode						$V_{DD} = 3.3 \text{ V}$, $V_{EN/BYPASS} = 3.3 \text{ V}$
Gain	S21	12.9	14.5	15.9	dB	
Output 1 dB Compression Point	OP1dB	10.7	11.5		dBm	
Evaluation Board Noise Figure	NF		1.0		dB	
Input Power for 1% EVM	IP1%		TBD		dBm	Waveform: 802.11a/g: PAR 11.6 dB
Bypass Mode						$V_{DD} = 3.3 \text{ V}$, $V_{EN/BYPASS} = 0 \text{ V}$
Gain	S21	-3.0	-1.0		dB	
Input 1 dB Compression Power	IP1dB		24		dBm	
Input Power for 1% EVM	IP1%		TBD		dBm	Waveform: 802.11a/g: PAR 11.6 dB

Typical Operating Curve Conditions

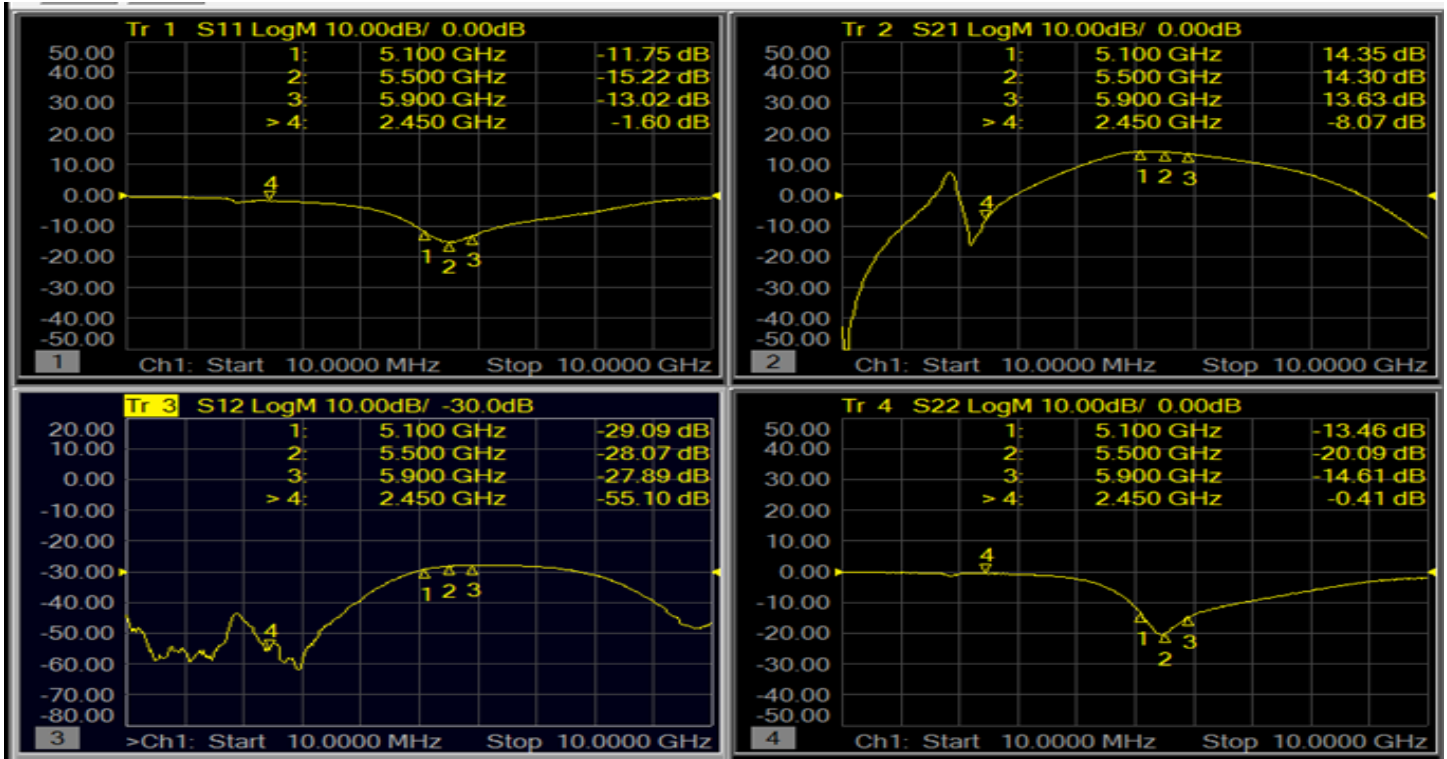
The following conditions apply unless noted otherwise: Typical Application Schematic using the 4.9 to 6 GHz tuning set. $M5 = 1.5 \text{ k}\Omega$. $V_{DD} = 3.3 \text{ V}$, $V_{EN/BYPASS} = \text{high}$, $I_{DD} = 15 \text{ mA}$. $F_{TEST} = 5.5 \text{ GHz}$. $T_{PKG \text{ HEAT SINK}} = 25 \text{ }^\circ\text{C}$. Evaluation board losses are included within the specifications.



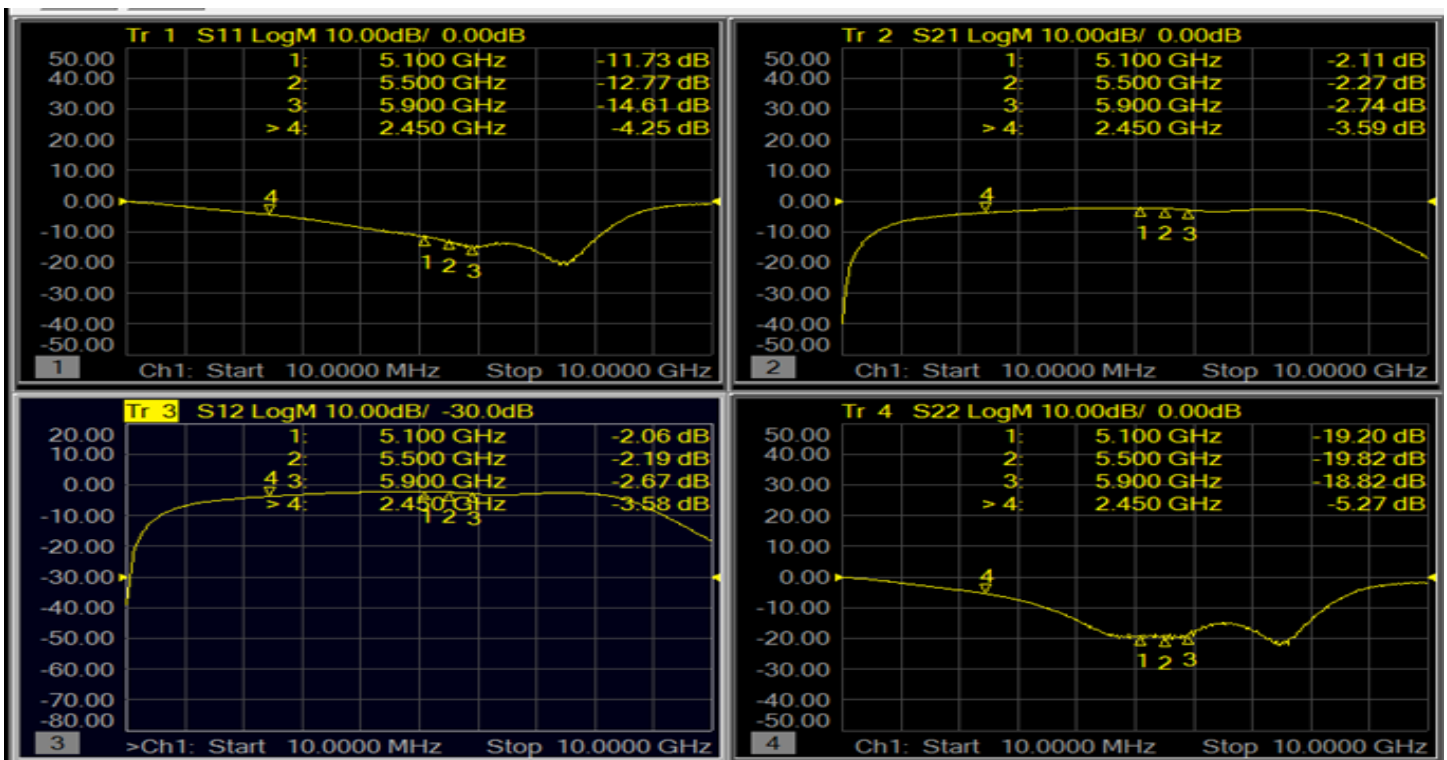
GRF2543 Evaluation Board Measured Data

Descriptor	Freq (MHz)	V _{DD} (V)	I _{DDQ} (mA)	Gain (dB)	IIP3 (dBm)	OIP3 (dBm)	IP1dB (dBm)	OP1dB (dBm)	EVB NF (dB)
GRF2543-4	5100	3.3	14.8	14.37	10.26	24.63	-1.2	12.05	1.00
GRF2543-4	5500	3.3	14.5	14.43	11.3	25.73	-0.7	12.7	0.97
GRF2543-4	5900	3.3	14.5	14.03	11.6	25.63	0.5	13.48	1.05
Descriptor	Freq (MHz)	V _{DD} (V)	I _{DDQ} (mA)	Gain (dB)	IIP3 (dBm)	OIP3 (dBm)	IP1dB (dBm)	OP1dB (dBm)	EVB NF (dB)
GRF2543-4 Bypass	5100	3.3	0.5	-1.98	23.77	21.79	24.9	21.95	--
GRF2543-4 Bypass	5500	3.3	0.5	-2.05	21.64	19.59	23.9	21.07	--
GRF2543-4 Bypass	5900	3.3	0.5	-2.82	21.37	18.55	21.9	18.33	--

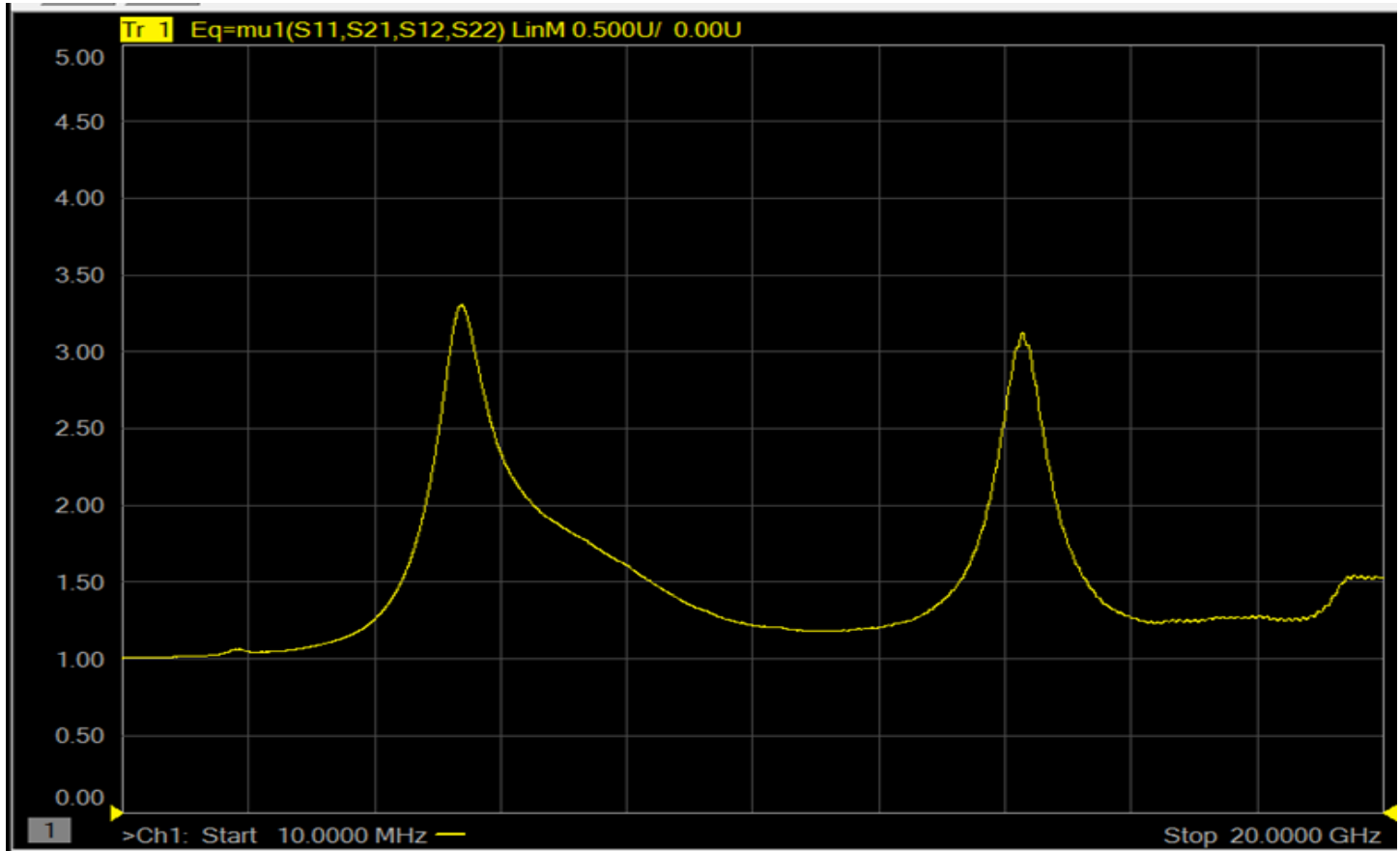
GRF2543 Evaluation Board S-Pars: Gain Mode (5.1 to 5.9 GHz Tune)



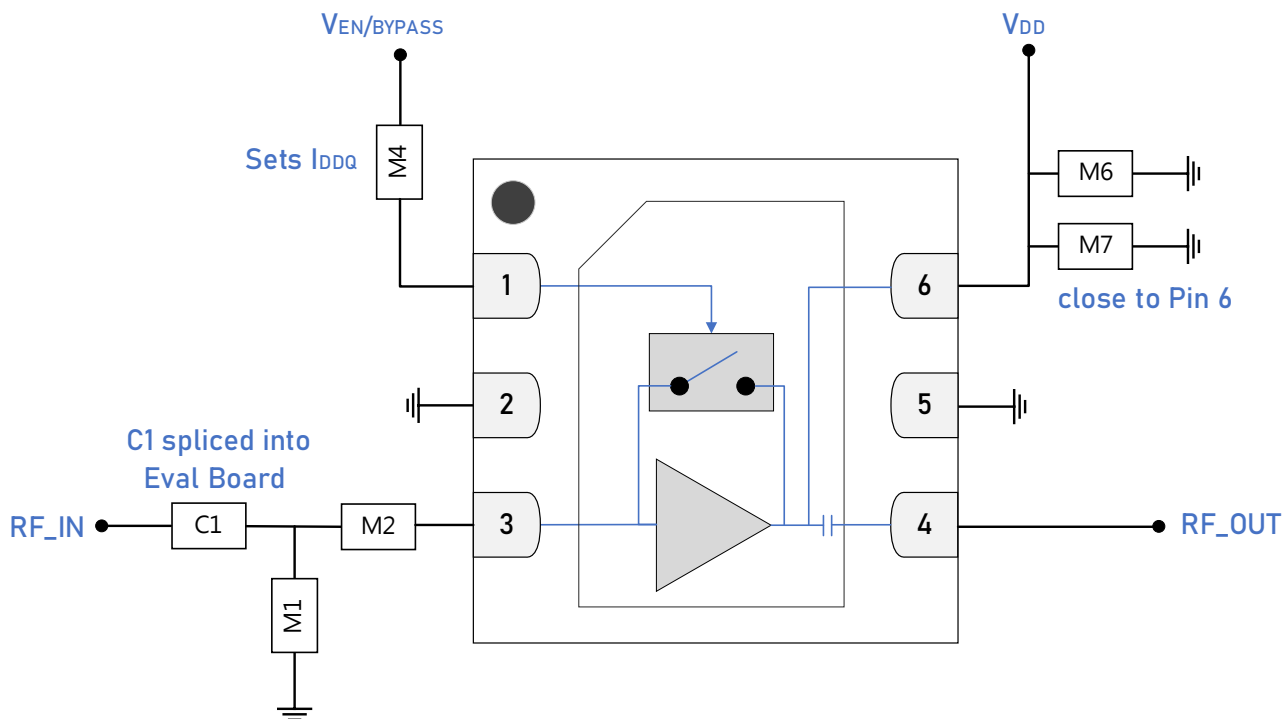
GRF2543 Evaluation Board S-Pars: Bypass Mode (5.1 to 5.9 GHz Tune)



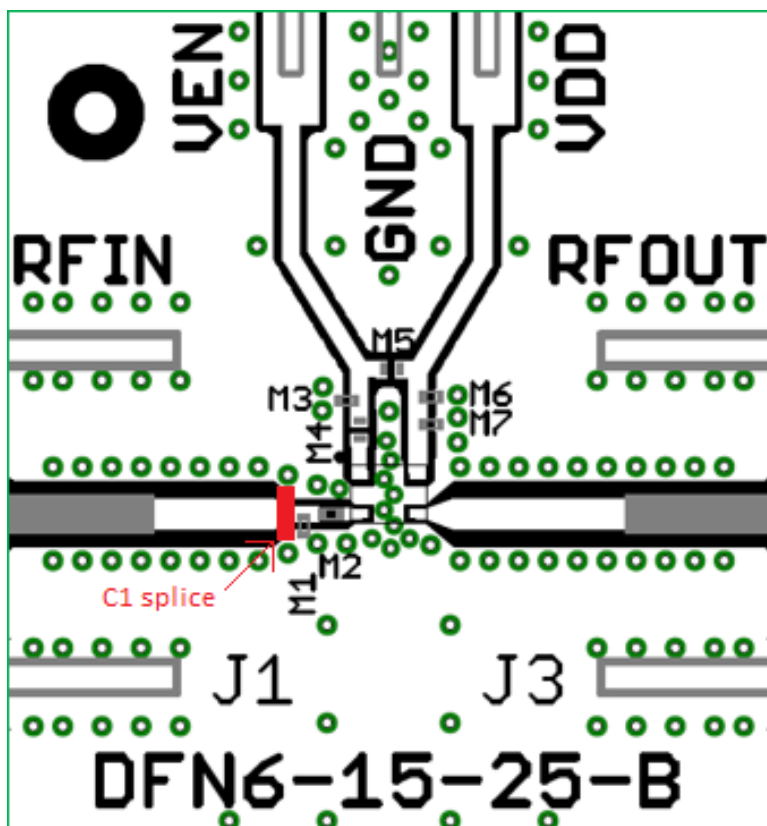
GRF2543 Evaluation Board Stability Mu Factor



Note: Mu factor ≥ 1.0 implies unconditional stability.



GRF2543 Standard Application Schematic

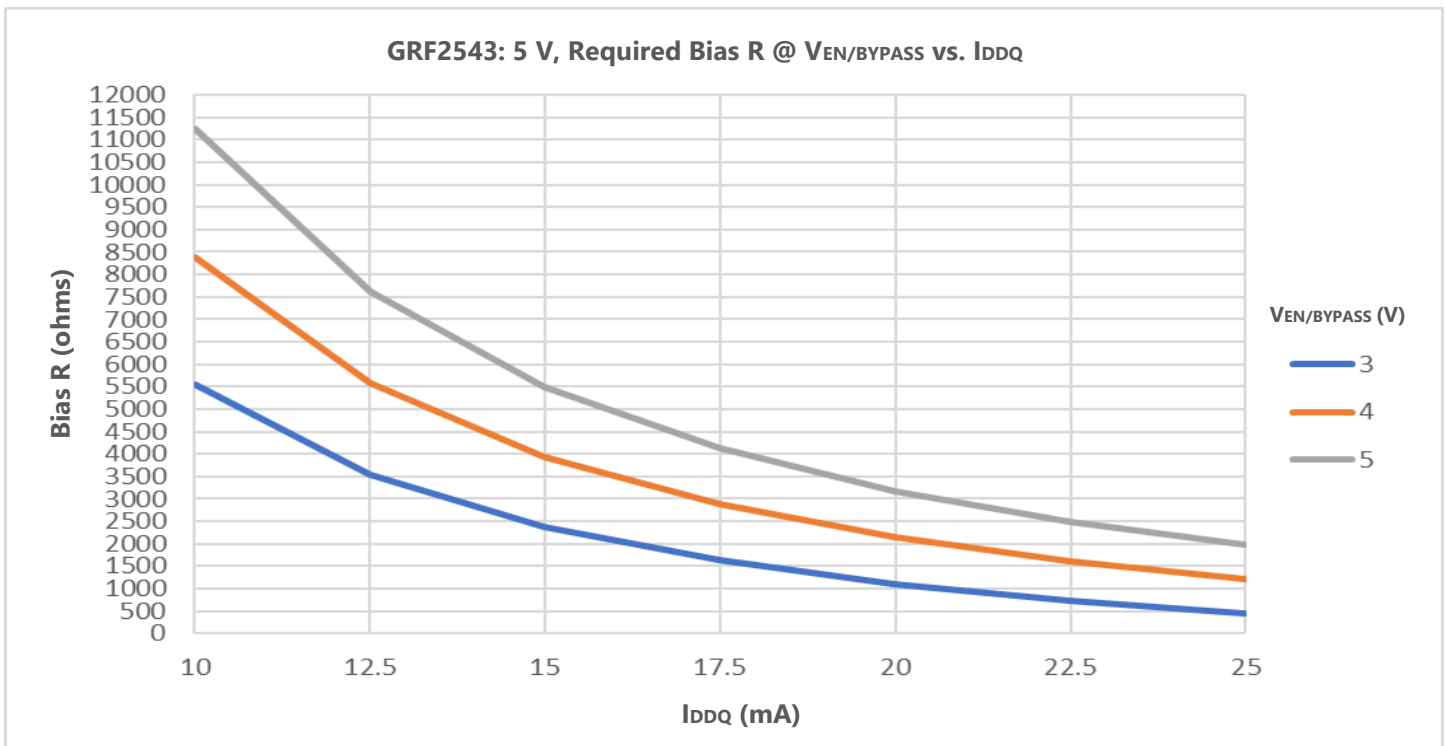
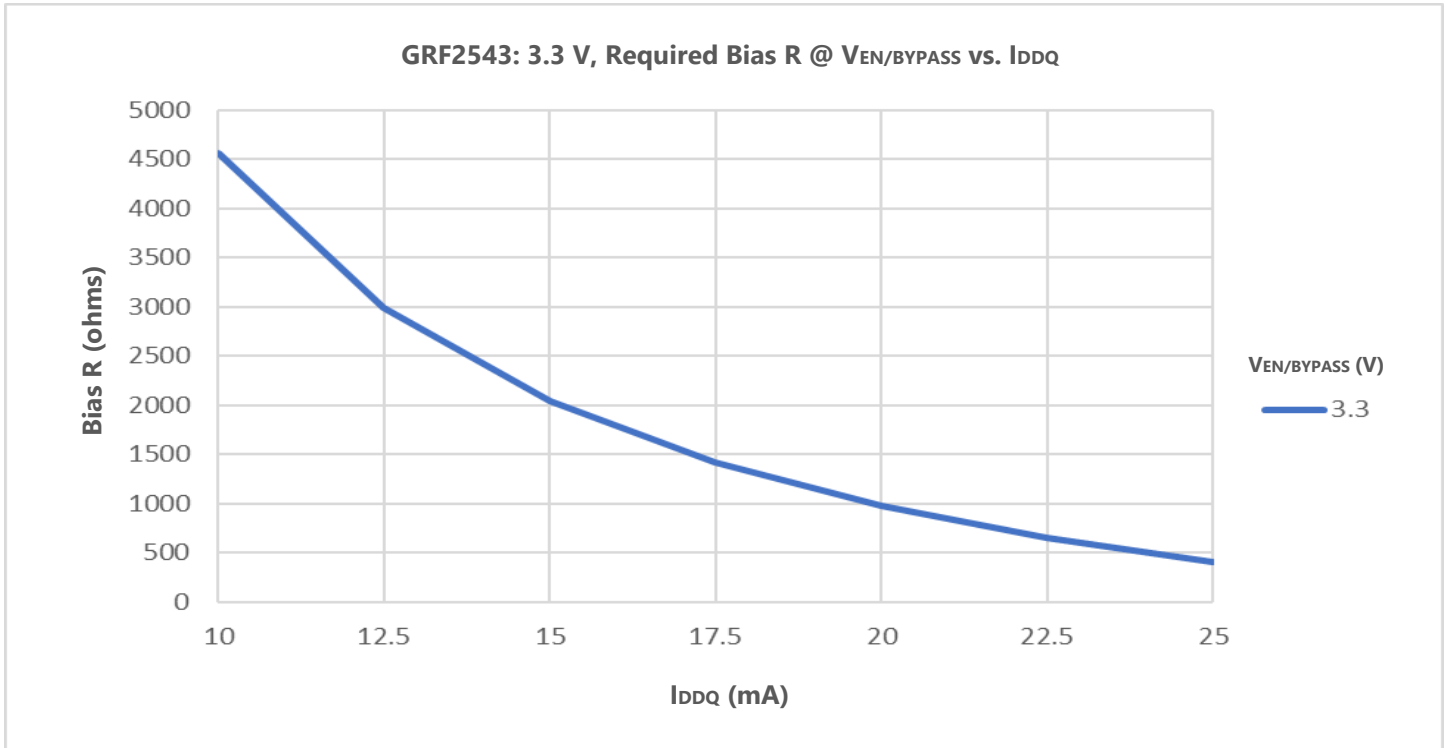


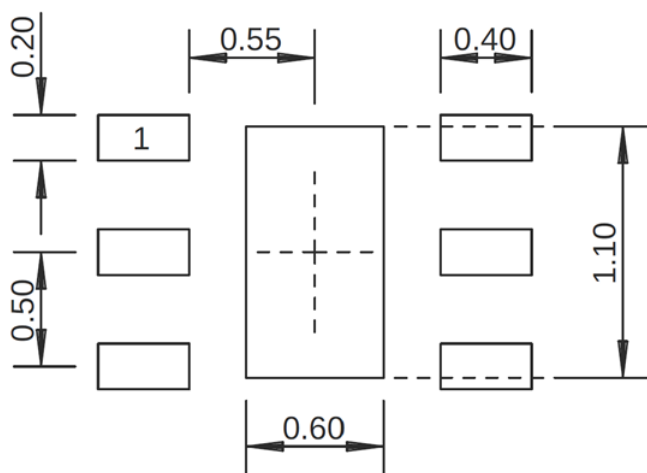
GRF2543 Evaluation Board Assembly Diagram

GRF2543 Evaluation Board Assembly Diagram Reference (5.1 to 5.9 GHz Tune)

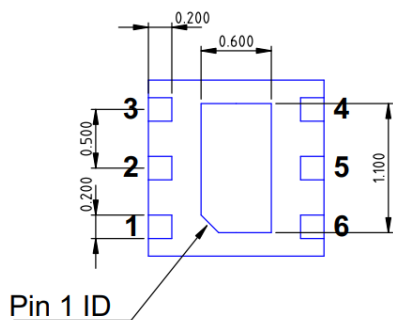
Component	Type	Manufacturer	Family	Value	Package Size	Substitution
C1	Capacitor	Murata	GJM	5.1 pF	0201	ok
M1	Capacitor	Murata	GJM	0.6 pF	0201	ok
M2	Resistor	Various	--	0 Ω	0201	ok
M4	Resistor	Various	--	--	0201	ok
M6	Capacitor	Murata	GRM	0.1 uF	0201	ok
M7	Capacitor	Murata	GJM	8.2 pF	0201	ok
Evaluation Board	DFN6-15-25-B					

GRF2543 Bias Resistor Selection Curves

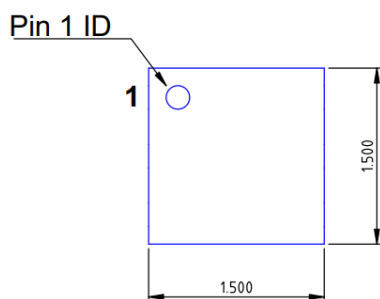




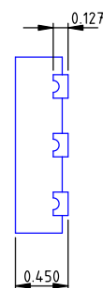
1.5 x 1.5 mm DFN-6 Suggested PCB Footprint (Top View)



Bottom View



Top View



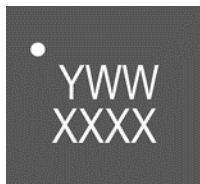
Side View

DFN6 1.5x1.5mm

Dimensions in millimeters
Dimensional Tolerance: ± 0.05

1.5 x 1.5 mm DFN-6 Package Dimensions

Package Marking Diagram



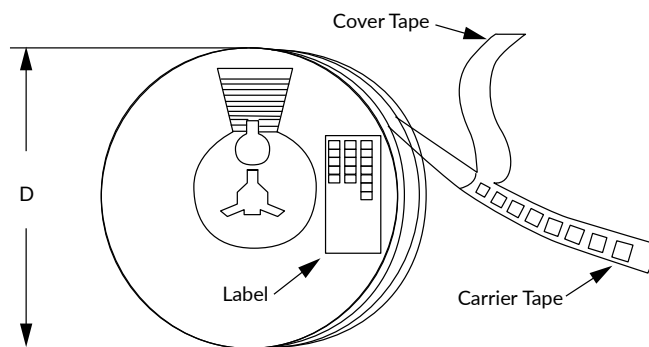
- Line 1: "Y" = YEAR (single digit). "WW" = WORK WEEK the Device was assembled.
- Line 2: "XXXX" = Device PART NUMBER.

Tape and Reel Information

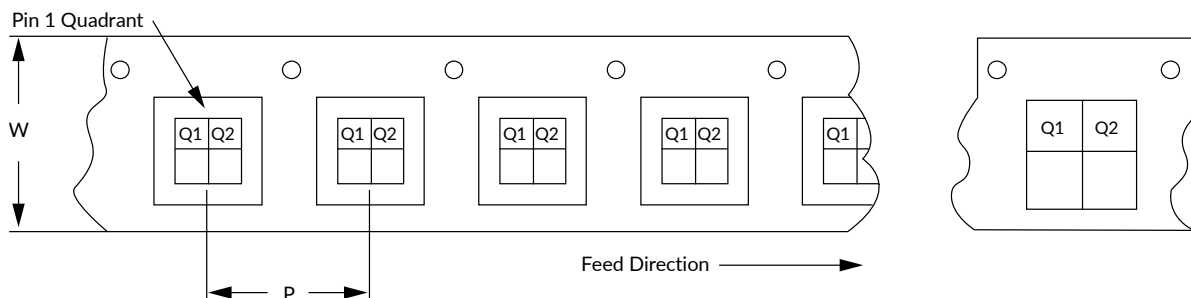
Guerrilla RF's tape and reel specification complies with Electronics Industries Association (EIA) standards for "Embossed Carrier Tape of Surface Mount Components for Automatic Handling" (reference EIA-481). See the following page for the Tape and Reel Specification and Device Package Information table, which includes units per reel.

Devices are loaded with pins down into the carrier pocket with protective cover tape and reeled onto a plastic reel. Each reel is packaged in a cardboard box. There are product labels on the reel, the protective ESD bag and the outside surface of the box.

For the Tape and Reel Reference Table, please refer to: [Package Manufacturing Information | Guerrilla RF \(guerrilla-rf.com\)](#)



Tape and Reel Packaging with Reel Diameter Noted (D)



Carrier Tape Width (W), Pitch (P), Feed Direction and Pin 1 Quadrant Information



Revision History

Revision Date	Description of Change
August 8, 2022	Converted Data Sheet to new format. Changed Switching Times to reflect latest test data.



Data Sheet Classifications

Data Sheet Status	Notes
Advance	S-parameter and NF data based on EM simulations for the fully packaged device using foundry-supplied transistor S-parameters. Linearity estimates based on device size, bias condition and experience with related devices.
Preliminary	All data based on evaluation board measurements taken within the Guerrilla RF Applications Lab. Any MIN/MAX limits represented within the Data Sheet are based solely on <i>estimated</i> part-to-part variations and process spreads. All parametric values are subject to change pending the collection of additional data.
Release Ø	All data based on measurements taken with <i>production-released</i> material. TYP values are based on a combination of ATE and bench-level measurements, with MIN/MAX limits defined using <i>modelled estimates</i> that account for part-to-part variations and expected process spreads. Although unlikely, future refinements to the TYP/MIN/MAX values may be in order as multiple lots are processed through the factory.
Release A-Z	All data based on measurements taken with production-released material <i>derived from multiple lots which have been fabricated over an extended period of time</i> . MIN/MAX limits may be refined over previous releases as more statistically significant data is collected to account for process spreads.

Information in this Data Sheet is specific to the Guerrilla RF, Inc. ("Guerrilla RF") product identified.

This Data Sheet, including the information contained in it, is provided by Guerrilla RF as a service to its customers and may be used for informational purposes only by the customer. Guerrilla RF assumes no responsibility for errors or omissions on this data sheet or the information contained herein. Information provided is believed to be accurate and reliable, however, no responsibility is assumed by Guerrilla RF for its use, nor for any infringement of patents, or other rights of third parties, resulting from its use. Guerrilla RF assumes no liability for any data sheet, data sheet information, materials, products, product information, or other information provided hereunder, including the sale, distribution, reproduction or use of Guerrilla RF products, information, or materials.

No license, whether express, implied, by estoppel, by implication or otherwise is granted by this data sheet for any intellectual property of Guerrilla RF, or any third party, including without limitation, patents, patent rights, copyrights, trademarks, and trade secrets. All rights are reserved by Guerrilla RF.

All information herein, products, product information, data sheets, and data sheet information are subject to change and availability without notice. Guerrilla RF reserves the right to change component circuitry, recommended application circuitry and specifications at any time without prior notice. Guerrilla RF may further change its data sheet, product information, documentation, products, services, specifications, or product descriptions at any time, without notice. Guerrilla RF makes no commitment to update any materials or information and shall have no responsibility whatsoever for conflicts, incompatibilities, or other difficulties arising from any future changes.

GUERRILLA RF INFORMATION, PRODUCTS, PRODUCT INFORMATION, DATA SHEETS AND DATA SHEET INFORMATION ARE PROVIDED "AS IS" AND WITHOUT WARRANTY OF ANY KIND, WHETHER EXPRESS, IMPLIED, STATUTORY, OR OTHERWISE, INCLUDING FITNESS FOR A PARTICULAR PURPOSE OR USE, MERCHANTABILITY, PERFORMANCE, QUALITY OR NON-INFRINGEMENT OF ANY INTELLECTUAL PROPERTY RIGHT; ALL SUCH WARRANTIES ARE HEREBY EXPRESSLY DISCLAIMED. GUERRILLA RF DOES NOT WARRANT THE ACCURACY OR COMPLETENESS OF THE INFORMATION, TEXT, GRAPHICS OR OTHER ITEMS CONTAINED WITHIN THESE MATERIALS. GUERRILLA RF SHALL NOT BE LIABLE FOR ANY DAMAGES, INCLUDING BUT NOT LIMITED TO ANY SPECIAL, INDIRECT, INCIDENTAL, STATUTORY, OR CONSEQUENTIAL DAMAGES, INCLUDING WITHOUT LIMITATION, LOST REVENUES OR LOST PROFITS THAT MAY RESULT FROM THE USE OF THE MATERIALS OR INFORMATION, WHETHER OR NOT THE RECIPIENT OF MATERIALS HAS BEEN ADVISED OF THE POSSIBILITY OF SUCH DAMAGE.

Customers are solely responsible for their use of Guerrilla RF products in the Customer's products and applications or in ways which deviate from Guerrilla RF's published specifications, either intentionally or as a result of design defects, errors, or operation of products outside of published parameters or design specifications. Customers should include design and operating safeguards to minimize these and other risks. Guerrilla RF assumes no liability or responsibility for applications assistance, customer product design, or damage to any equipment resulting from the use of Guerrilla RF products outside of stated published specifications or parameters.